

BACHERT PORTABLE FIRE PUMP

Type

TS 16/8**Applications:**

BACHERT Fire Fighting Centrifugal Pump Type TS 16/8 is of two-stage design for quick response fire fighting



BAVARIA EGYPT (S.A.E.)
Gisir El Suez St. Block 109, Industrial Zone,
Ismailia Desert Road, Cairo-Egypt
PO Box: 2016/11111 Cairo-Egypt

Tel. : + 20 (2) 2698 9443 / 5 / 6
Fax : + 20 (2) 2698 8447
Website : www.bavaria-firefighting.com
Email : international.sales@bavaria.com.eg

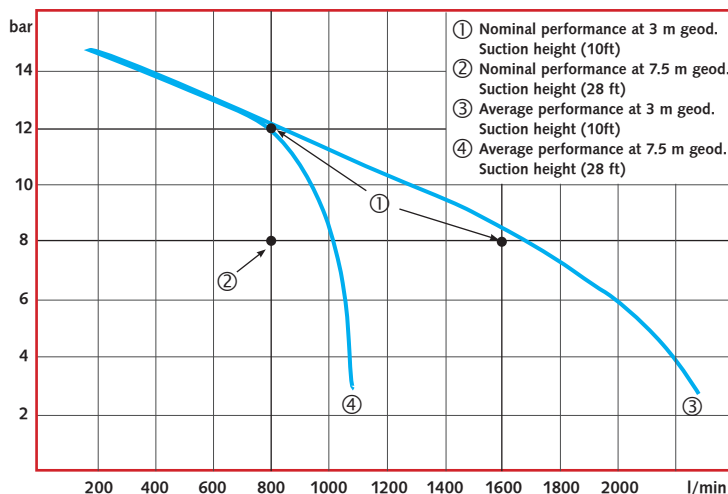
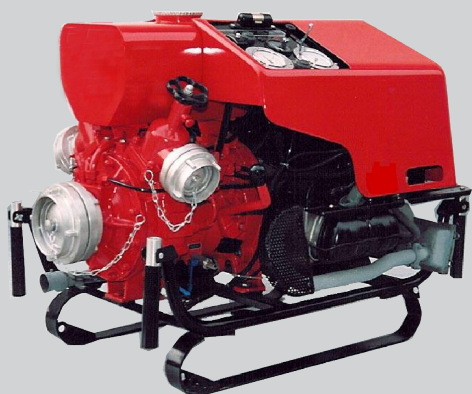


BAVARIA Brandschutz Industrie GmbH & Co. KG
Regensburger Str. 16,
93449 Waldmünchen
Germany

Tel. : + 49 (9972) 9401-0
Fax : + 49 (9972) 9401-17
Website : www.bavaria-firefighting.com
Email : info@bavaria-brandschutz.de

BACHERT PORTABLE FIRE PUMP

Type: TS 16/8

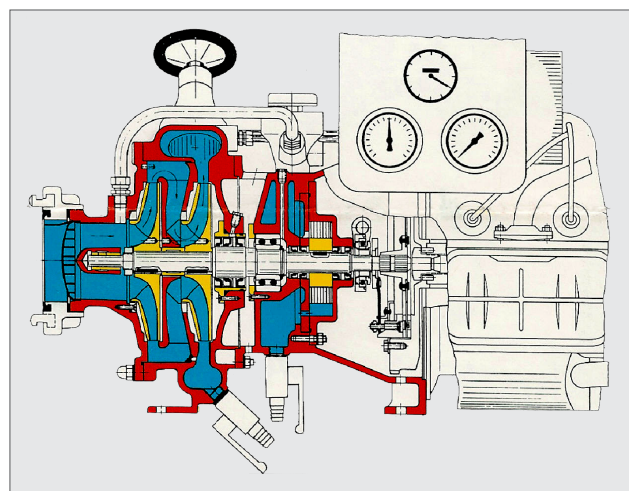
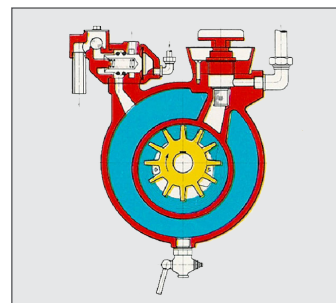


TS 16/8	Ltrs./min (I.G.P.M.)	Bar (psi)	Geodetical suction height
Nominal Performance	1600 (352)	8 (114)	3.0 m (10 ft)
Max. Performance	up to 1700 (374)	8 (114)	3.0 m (10 ft)
	up to 1000 (220)	8 (114)	7.5 m (28 ft)

Features:

- High power, highly reliable VW-industrial engine
- Has the highest performance of discharge capacity
- Quick priming due to the entire automatic water-ring
- Does not affected by muddy water
- Air cooled by v-belt driven fan
- Single central 4 inch (104 mm) suction inlet equipped with a fixed suction filter and blank cap
- Equipped by a drainage valve at the lowest point of the pump
- Reliable electric starter and crank handle starter to guarantee starting the engine under all condition, even in absence of the battery
- Equipped by manual single dry clutch between engine and pump
- Pressure gauge, vacuum gauge, the choke knob lighting lamp and other control knobs and switches are located at the control panel for easy operation.
- Equipped with oil pressure control lamp
- Equipped with operation time counter
- Engine and pump are forming on entire unit mounted on a stainless steel sledge
- Equipped with 4-handles for easy carrying
- Delivered with battery, two 4 inch (104 mm) suction hoses, two suction spanners, tool kit

Water-ring-primer



Cross-section drawing of the 2-stage
Portable-Fire-Pump TS 16/8

**BAVARIA**

Fire Fighting Solutions

When It Comes To Your Safety Only The Best Is Good Enough

BAVARIA**BACHERT PORTABLE FIRE PUMP****Type: TS 16/8****Technical Data:**

Manufacturer		Amdac-Bachert GmbH - Germany	
Model		TS FP 16/8	
Engine	Type	126 A	
	Design	4-stroke, 4 cylinder air cooled	
	Output	35 KW (46 HP) at 3600 rpm	
	Fuel tank Capacity	18 l	
	Starting System	Electric starter motor and manual by crank handle	
	Ignition	Mechanical magneto	
	Lubrication	Oil cooling system	
	Lubricant	3.5 l	
	Battery	12 V – 30 Ah	
Pump	Design	2-stage, Centrifugal pump	
	Discharge Outlet Coupling	two 63 mm (2 ½ inch) instantaneous coupling BS 336	
	Suction inlet Coupling	102 mm (4inch) Storz coupling	
	Priming	Automatic water – ring type	
	Pump Performance (suction height: 3 m)	1600 l/min at 8 bar (3200 rpm)	
General	Overall Dimensions (l x h x w)	Approx. (115x90x80) cm	
	Mass without fuel	Approx. 180 kg (include battery)	
	Max. Suction Height	7.5 m	

Warranty:

Period of Warranty	1 Year
Coverage of the Warranty	Against material failure and production defects
Method of Warranty Coverage	Limited to the replacement of the defected part or product after verification that the failure is covered by the scope of the warranty
Warranty Exclusions	Failures due to misuse, mishandling, or inspection or repair by an unauthorized dealer or entity

★ The illustrations may show optional extras only available at extra charge. BAVARIA retains the right to alter specifications and illustrations given herein without prior notice. Specifications will only be considered communicated at placing of order.

3/3